

BigBend Health.com

Your Community Health Care Network

Home

About

Board

Services

Sponsors

Contact

Careers



BigBend  Health.com
Careers

My Records



BigBend  Health.com
My Records

Physicians



BigBend  Health.com
Physicians

Resources



BigBend  Health.com
Resources

© Copyright 2009 BigBend  Health.com

Strategies for a Recommended Plan

Table of Contents

Executive Summary	2
FHIN: Florida's Experience with Health IT	4
History	4
Current Status	5
Collaborative Model	6
Visual Overview	7
Core Principles	8
Quality Patient Care & Timely Access	8
Disaster Recover & Business Continuity	8
Managed Costs & Coverage	9
Privacy & Security of Health Information	10
Collaborative Activities	10
Education & Outreach	11
Broadband Infrastructure	11
Health IT Adoption & Support	13
Health Information Exchange	14
Quality Improvement & Research	14
Economic Development & Job Creation	15
Using Best Practices	15
Collaborative Organization & Governance	16
State Level Governance	16
Local and Regional Level Governance	19
Technical Architecture & Infrastructure	20
Overview Diagram	20
Critical Concepts of Successful Implementation	23
Workplan: Objectives & Strategies	26
1: Enable Establishment of Local HIEs (RHIOs) Across Florida	27
2: Build Broadband Infrastructure & Enable Connectivity for Rural/Remote Providers	27
3: Promote EHR Adoption & Meaningful Use of Health IT	27
4: Provide Access to Hosted Certified EHR Services for Small Providers	28
5: Enable Universal Access to Payer & Medicaid Claims Data	28
6: Build State Level HIE Connectivity	28
7: Support of Quality Measure Reporting & Research for Improved Population Health	29
8: Economic Stimulus & Job Development	29
9: Collaborate with Social Services Agencies	29
10: Encourage Consumer Use of Certified Interoperable PHRs	29
11: Ensure Confidence in the Privacy of Health Information & Security of Health Information Exchange	30
Contributing Authors/Editors	30
Chartable Summary of Plan	32

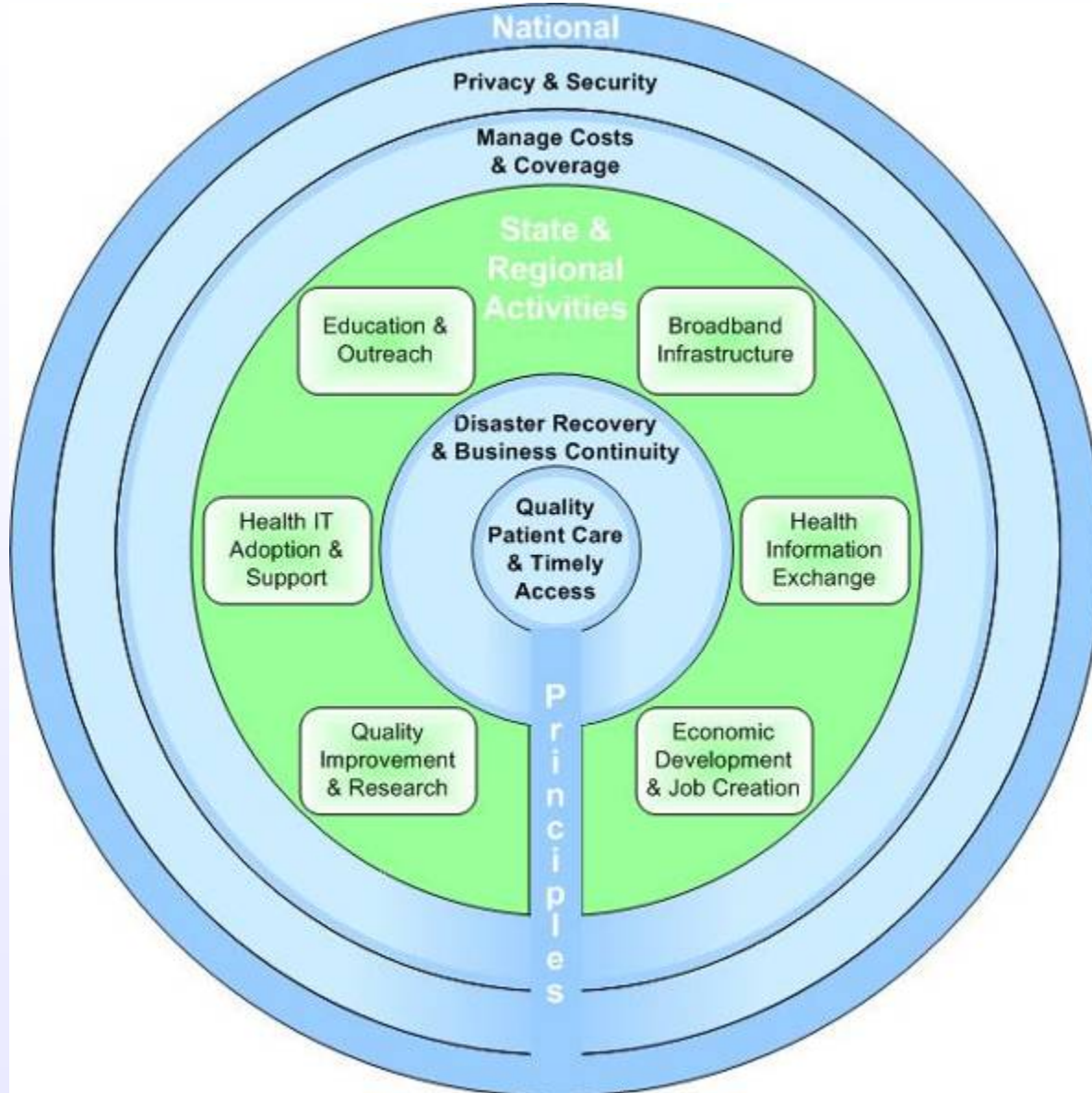
Florida is a National Leader for HIE!

State-level HIE Capacity Building (2000-2008) and Cost per Resident

	Total Funds 2000-2008 ¹	Population Estimate 2008 ²	Cost per Resident
Florida	\$6,000,000	18,328,340	\$0.33
California	\$20,000,000	36,756,666	\$0.54
Michigan	\$6,000,000	10,003,422	\$0.60
Maine	\$3,000,000	1,316,456	\$2.28
Tennessee	\$15,000,000	6,214,888	\$2.41
Vermont	\$5,000,000	621,270	\$8.05
New York	\$202,000,000	19,490,297	\$10.36
Rhode Island	\$11,000,000	1,050,788	\$10.47

Figure 1.

Collaborative Model



Collaborative Model

Nationally Aligned Core Principles:

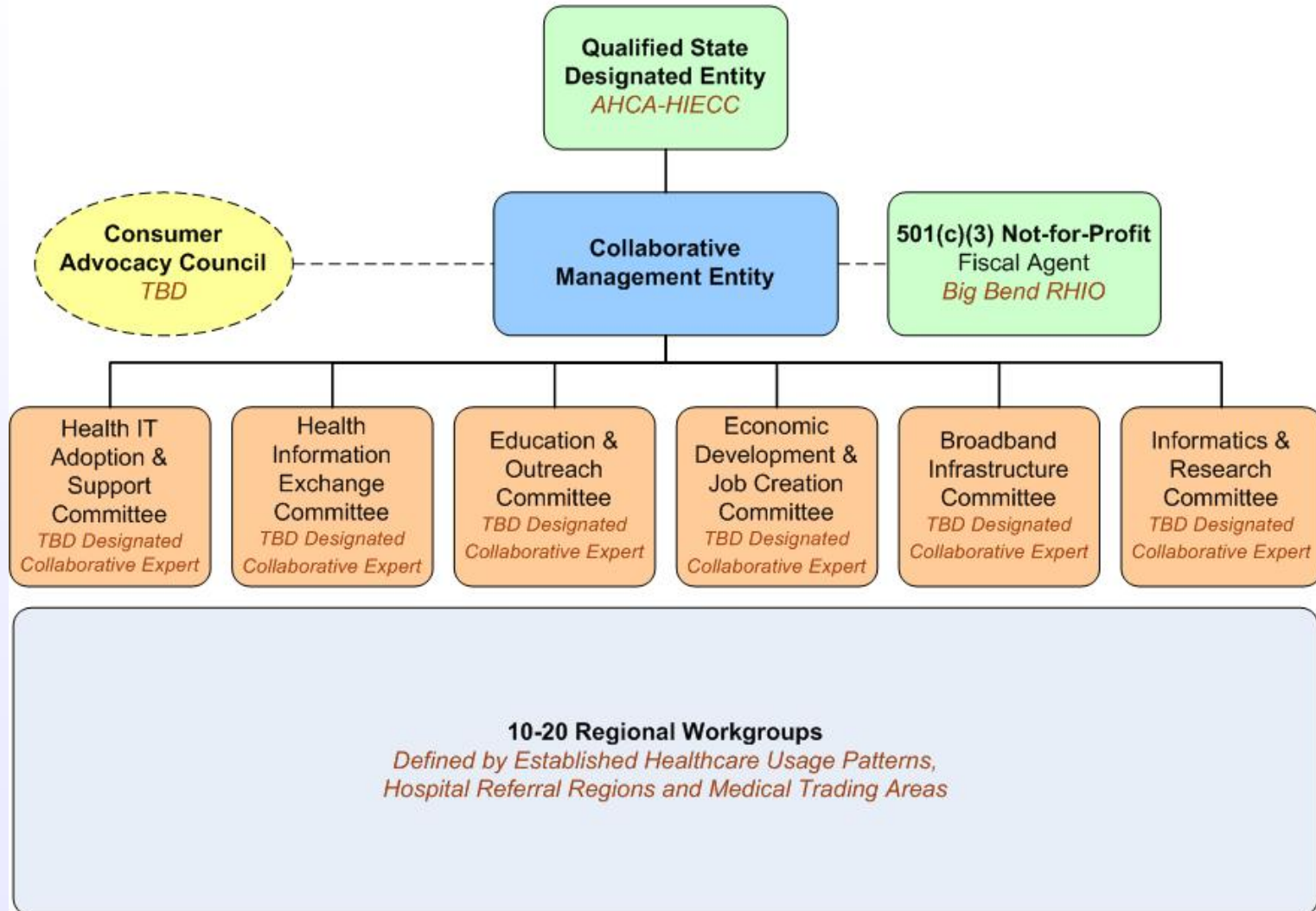
- Privacy and Security
- Managing Costs and Coverage
- Disaster Recovery and Business Continuity
- Quality Patient Care and Timely Access

State & Regional Collaborative Activities:

- Education & Outreach: *Providing Resources for Patients, Providers and Health IT Users*
- Broadband Infrastructure: *Creating Reliable Broadband Networks and Connectivity*
- Health IT Adoption & Support: *Enabling Operations through Training/Implementation*
- Health Information Exchange: *Facilitating Secure HIE Locally and Statewide*
- Quality Improvement & Research: *Using Informatics and Reporting to Improve Patient Safety*
- Economic Development & Job Creation: *Supporting Growth in the Healthcare Sector*

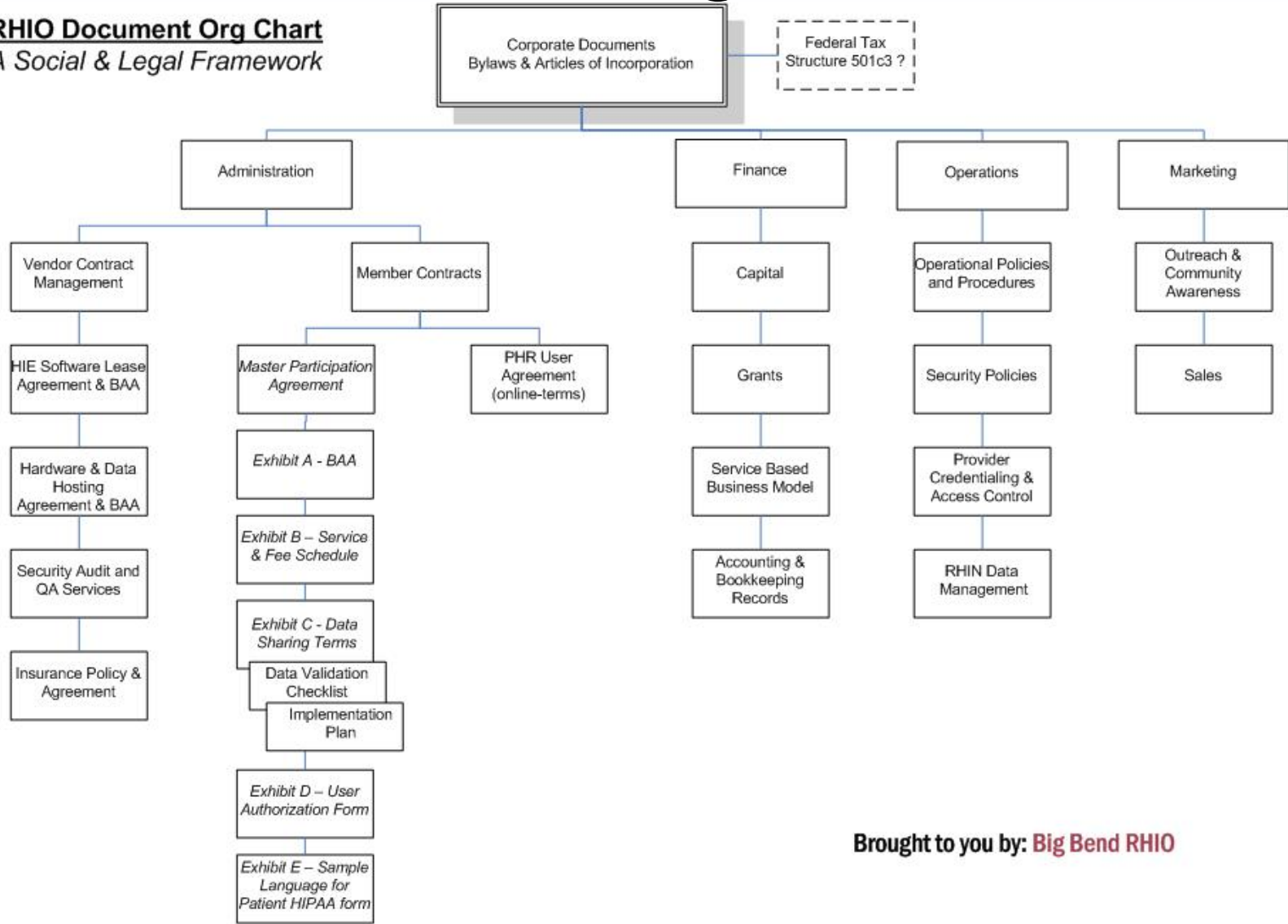
Possible Collaborative Governance Structure

Florida Health IT and HIE Governance and Organization Chart



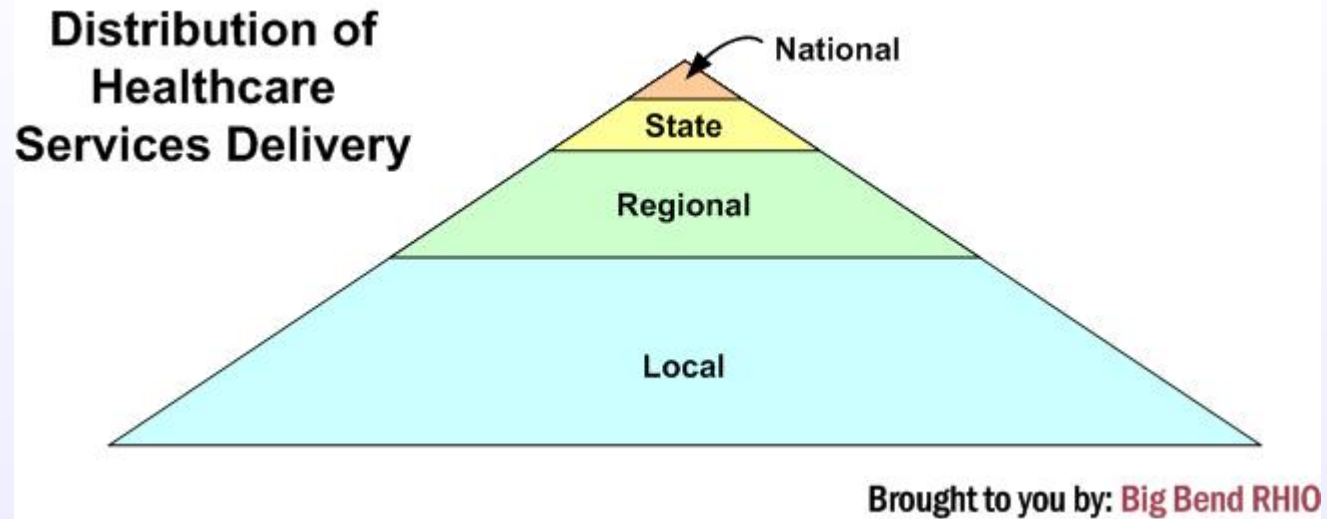
Local Social & Legal Framework

RHIO Document Org Chart
A Social & Legal Framework



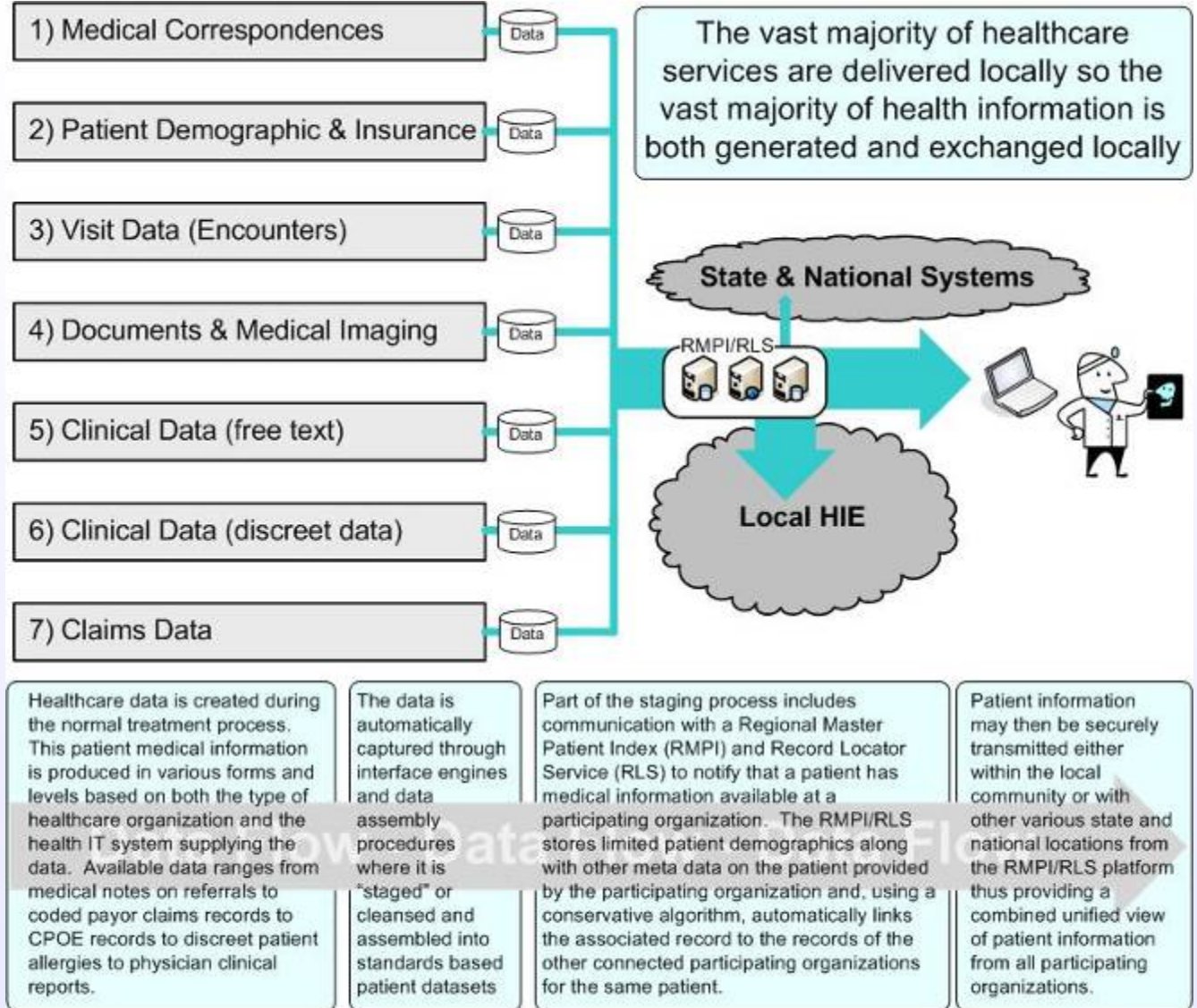
Brought to you by: **Big Bend RHIO**

Healthcare Service Delivery & Exchange



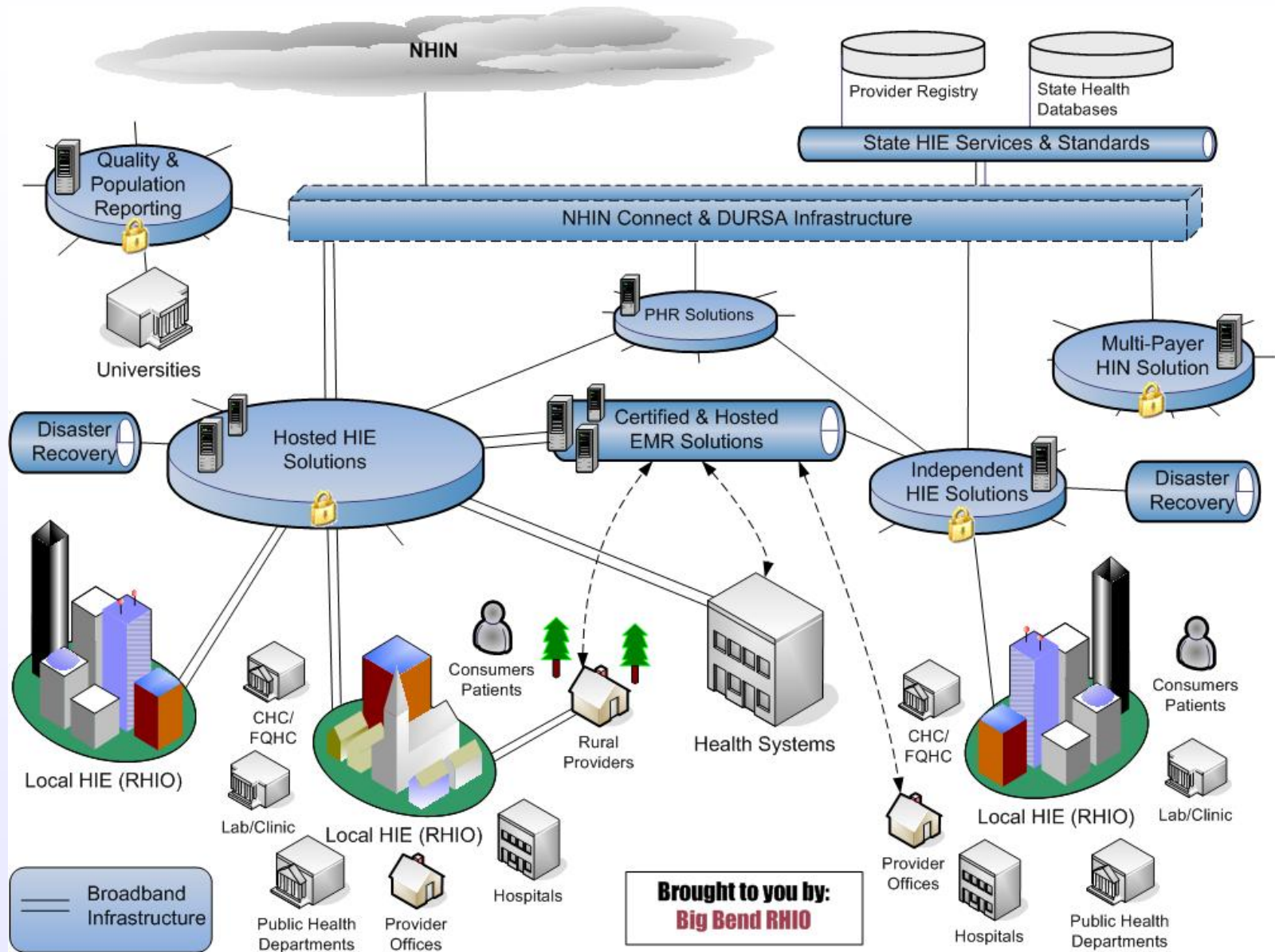
Data Types & Data Flow

To build Health IT & HIE system that work you must understand what data is available and how it fits into a healthcare providers workflow

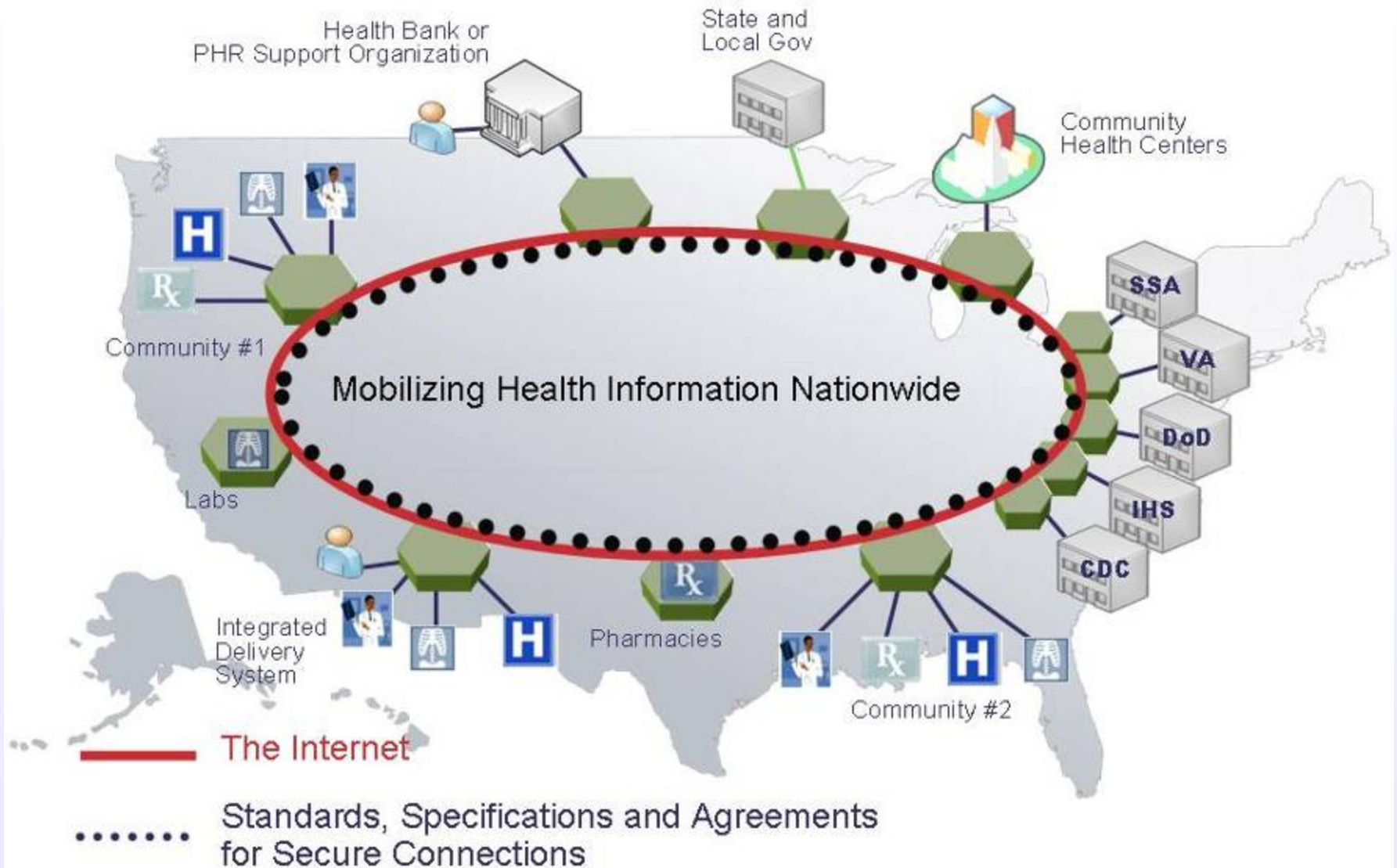


Brought to you by: **Big Bend RHIO**

Collaborative Technical Architecture Model



The Nationwide Health Information Network



Template Workplan: Objective & Strategies

- Continue to evolve based on successful measureable results
- Align cooperative and competing strategies to lessons learn (what we know works!)
- Leverage collaborative participants with expertise & experience in specific area to describe, document & implement objectives & strategies

Workplan: Objectives & Strategies

- 1: Enable Establishment of Local HIEs (RHIOs) Across Florida
- 2: Build Broadband Infrastructure & Enable Connectivity for Rural/Remote Providers
- 3: Promote EHR Adoption & Meaningful Use of Health IT.....
- 4: Provide Access to Hosted Certified EHR Services for Small Providers
- 5: Enable Universal Access to Payer & Medicaid Claims Data
- 6: Build State Level HIE Connectivity
- 7: Support of Quality Measure Reporting & Research for Improved Population Health....
- 8: Economic Stimulus & Job Development
- 9: Collaborate with Social Services Agencies
- 10: Encourage Consumer Use of Certified Interoperable PHRs
- 11: Ensure Confidence in the Privacy of Health Information & Security of Health Information Exchange.....

Questions

http://www.bigbendhealth.com/FloridaHealthITPlan_WorkingDraft.pdf

Thank you!

HIE, RHIO, EHR & More...

Health Information Exchange

Regional Health Information Organization

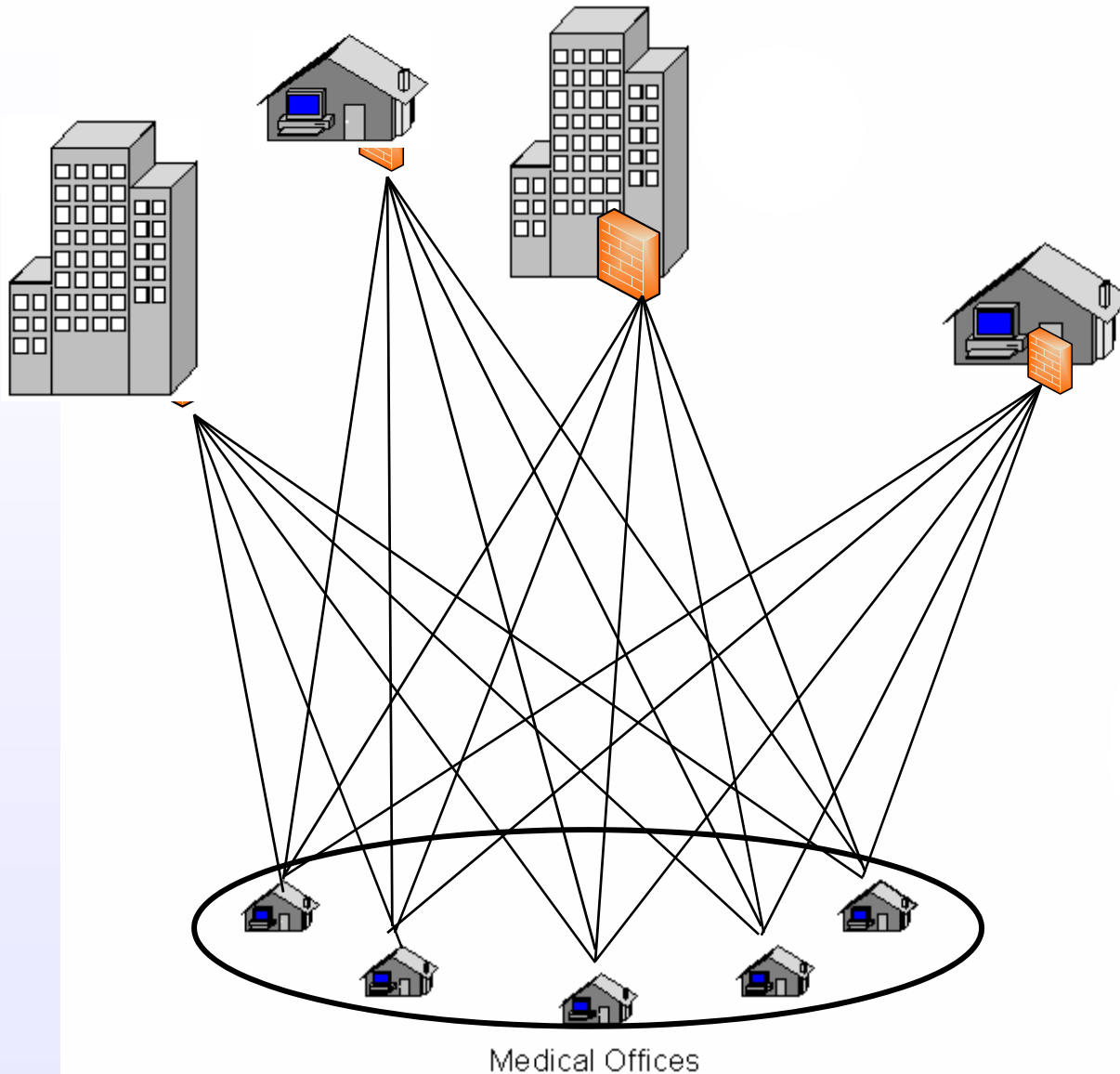
Regional Health Information Network

Electronic Health Record vs Electronic Medical Record

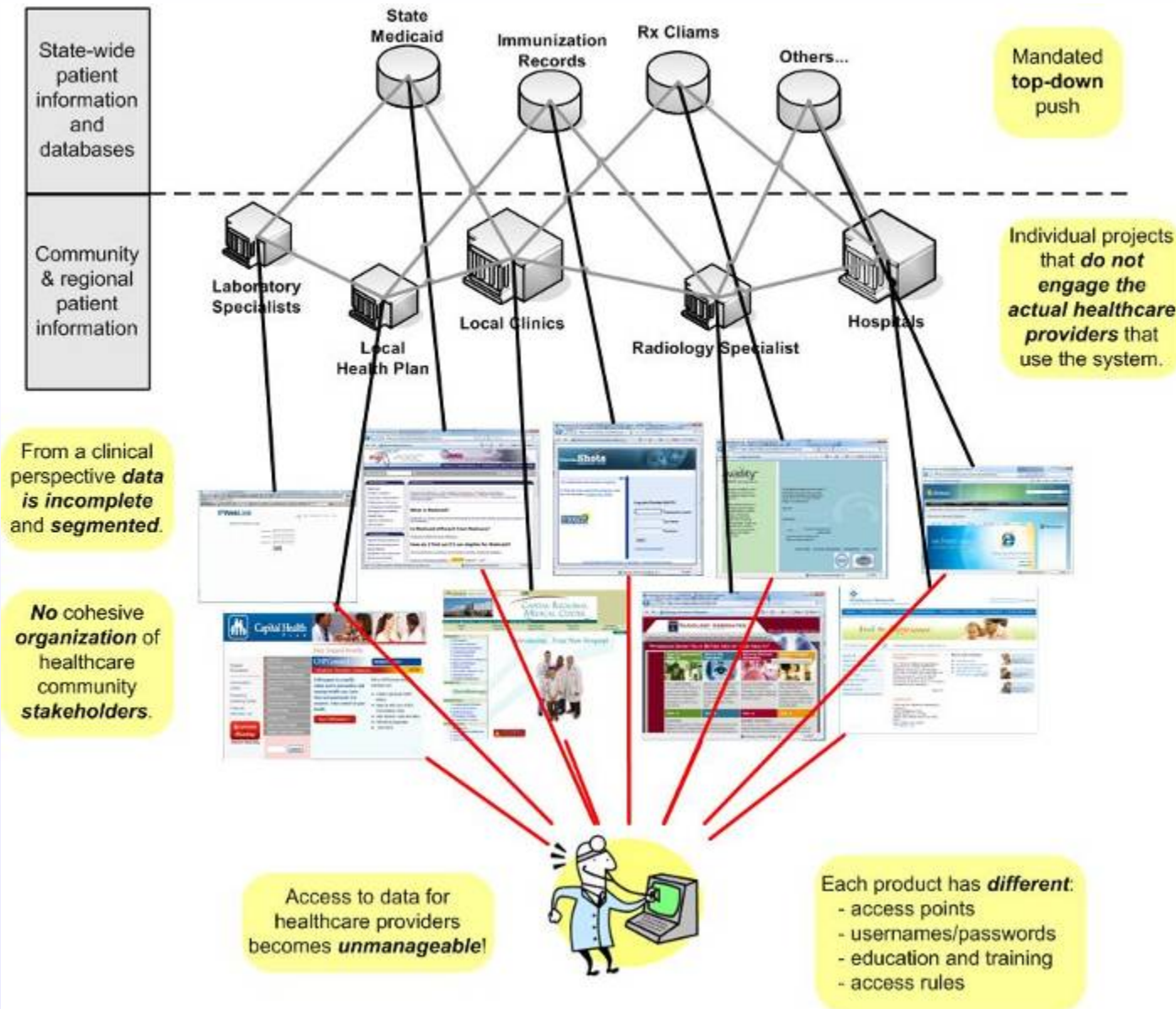
Personal Health Record

- **HIE** is the general term used to describe large-scale electronic communication of patient information between different healthcare providers
- The **RHIO** is the governing body of community healthcare provider stakeholders who defines the policy and procedures for HIE
- The **RHIN** platform is the hardware and software that allows for the secure data sharing of electronic patient medical records between different healthcare providers
- An **EMR** is the electronic replacement to the paper chart for a patient and an **EHR** is simply an **EMR** that is connected to an HIE system
- The **PHR** is the demographic and medical history data provided by the patient

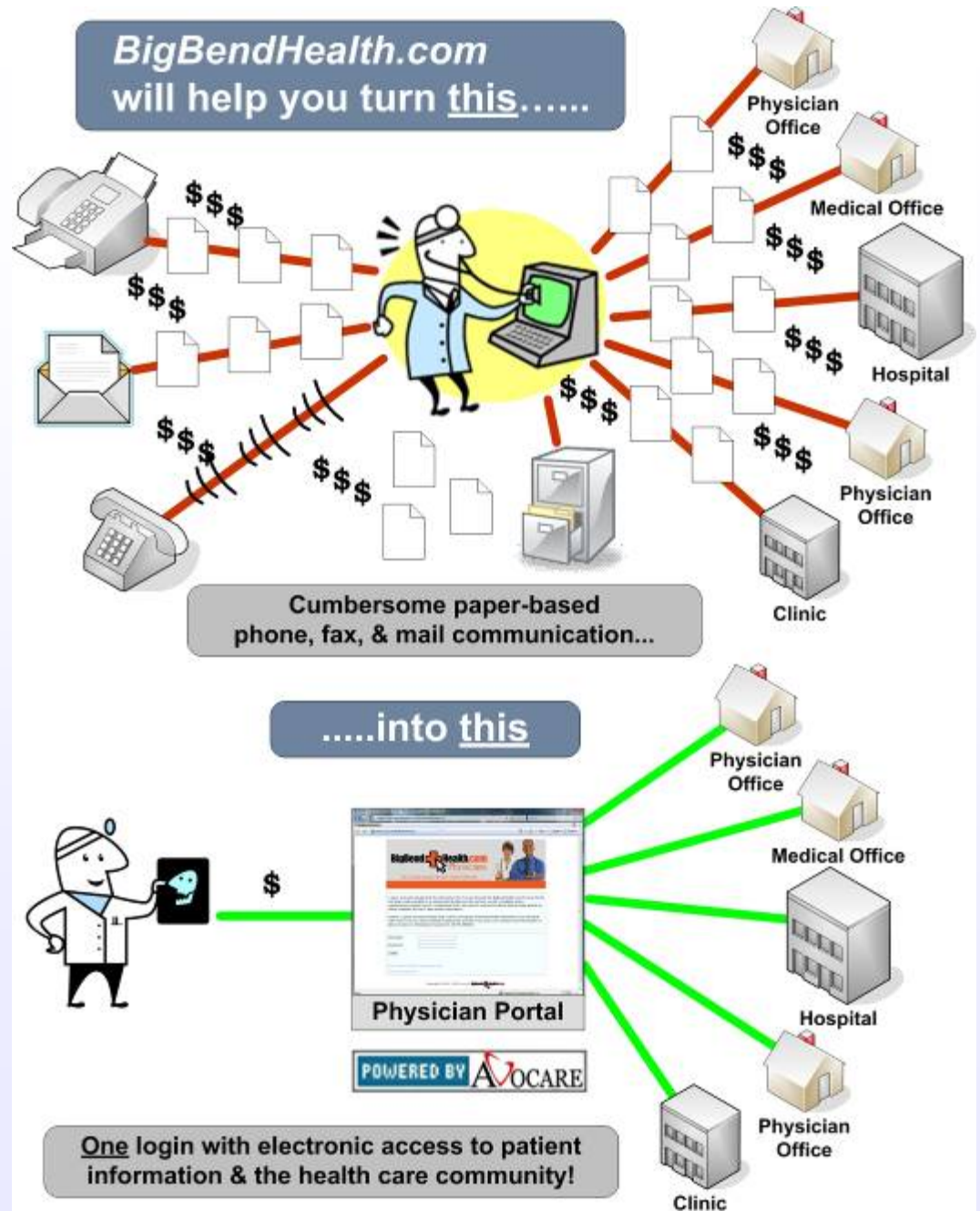
Current Infrastructure Issues



Current Software Issues



Current Communication Issues



A Solution that is Controlled by You

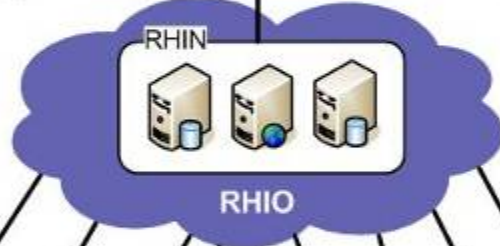
One access point and single login for patient information outside of the EMR!

- one login
- one set of policies
- one local credentialing organization



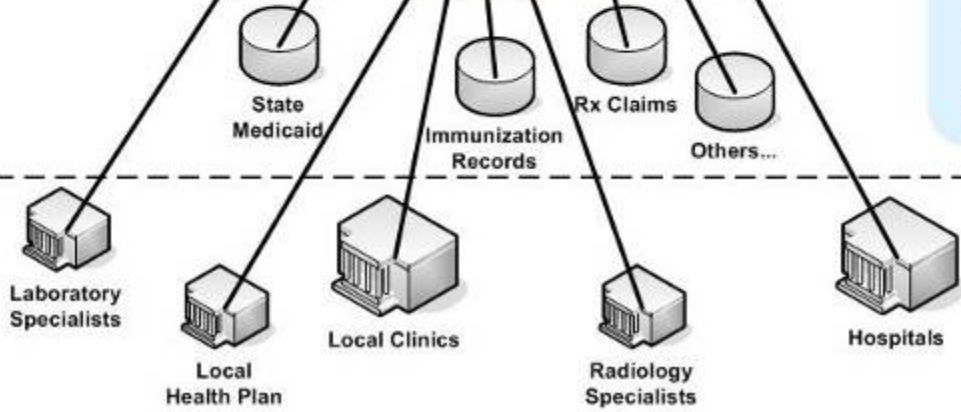
RHIOs are uniquely poised both technologically and politically to **integrate local and state data** and deliver it to the healthcare providers of the community.

From a clinical perspective, the RHIN helps put the **control** of how data is displayed and organized **into the hands of the stakeholders** who are actually providing care.



State-wide patient information and databases

Community & regional patient information



Cooperative projects that involve the stakeholders of the community region **through the governance of the RHIO.**

Community driven ground-up approach

What is the Value of Local HIE

There are many well documented values to HIE so the follow list was created from a local perspective at the community level:

- Participation in physician and hospital owned infrastructure
- Reduction of monopoly influence
- Reductions in office administrative costs (paper printing, mailing and postage)
- Increase in staffing efficiencies due to reduced time handling faxes & phone calls
- Consolidate and reduce data interfacing costs
- Reductions in employee recruitment and hiring costs
- Easier communication with social services and community health resources
- Advertising opportunities at the community level
- Improved patient relationships

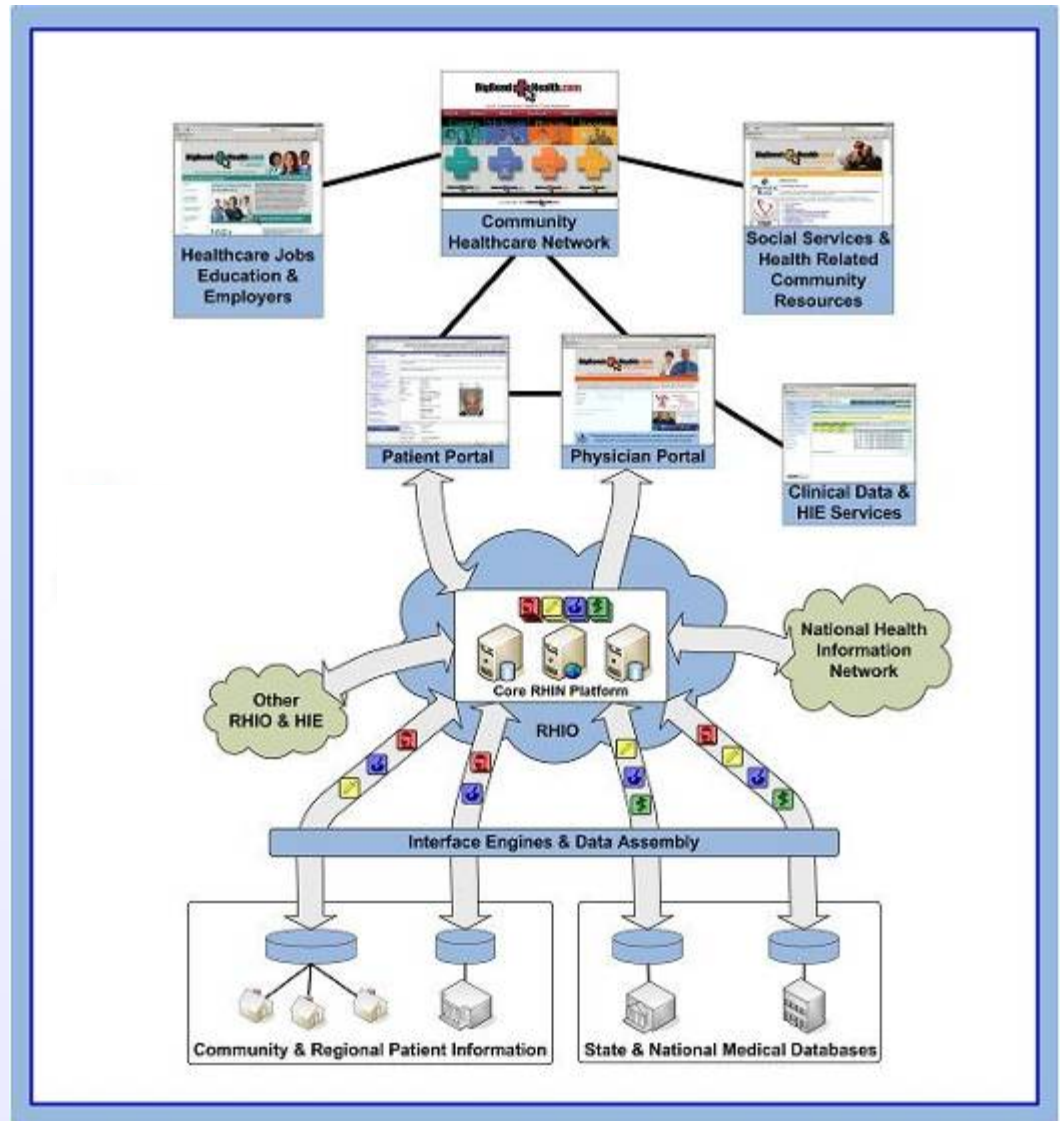
The Expanded Vision of HIE

Never before have so many health care resources been offered in one convenient place. This technology is a first-of-its-kind, community-based health resource that produces economic benefits, a connected workforce, improved care and a medical records management breakthrough. Community HIE initiatives involve and bring together every major component of local health care. Under this model we empower and leverage one of the community's largest private sector industries -- **healthcare**. As we continue to facilitate local level HIE, we prepare the community to integrate with the state and national health information networks.





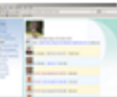

This effort can become the region's single point of reference for health care.

Technical Infrastructure

- The Federated vs Centralized myth
- Does the technology align to your legal structure?
- Does the technology provide sellable services to your members?
- Cost effective?



HIE Office Automation Services

	Patient Demographic & Insurance Download - Download and print patient information or import directly into your Practice Management or Electronic Health Record (EHR) systems. Patient information is available from any connected provider as well as the Patient Portal and includes demographics, insurance, emergency contacts, next of kin and more!
	Referral Management - Allows users to efficiently manage in-coming and out-going referrals within their office. Electronic forms are simple and easy to fill out as patient information is pre-populated from the RHIN system. No more filing cabinets full of paper referral request forms!
	Data Access - Allows connected health care providers to securely send and receive patient clinical information electronically.
	Document Sharing & Print to RHIN – Secure electronic document imaging with simple-to-use document upload and management capabilities. Allows your office to <u>securely</u> share your paper records with any connected healthcare provider. We make sending documents easy as printing! No more print-fax-shred, print-fax-shred, print-fax-shred...
	Provider Messaging & Notifications - Secure communication for connected health care providers. Think email and social networking that is HIPAA compliant.
	Data Feed & Interfacing - System interface solutions (HL7) deliver discrete data elements and help to connect your internal stand-alone systems.